

# **CID – Decommissioning Integrated Center**

## **PCA-1, 2 e 3 Projects**



# CID Centro Integrado de Descomissionamento

Mac Laren Logistics has created the **CID – Centro Integrado de Descomissionamento (Decommissioning Integrated Center)** With the objective of making available to the companies that are going to execute offshore decommissioning in Brazil the best operational



## The Group

The Mac Laren Group owns and operates two units:

- ✓ ML PA, with infrastructure for logistic support including a bonded warehouse, and
- ✓ ML IC, where CID has been structured, located at Ilha da Conceição (Conception Island)

Both units are located in Niterói inside the Guanabara Bay in the state of Rio de Janeiro.



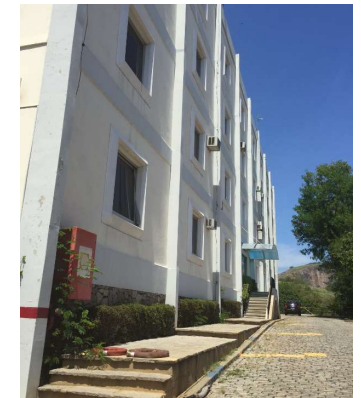


## CID - Centro Integrado Descomissionamento



The CID is equipped with all necessary requirements to support, in its available 76,000 sqm, the needs of companies executing decommissioning operations including physical, documental and human resources structures.

## Centro Integrado de descomissionamento **1 - Office building** for the Project and Inspection Teams



Four floor building, adding up to 2,800 sqm of useful space, equipped with the necessary infrastructure and ready to receive the client's employees, as well as final client inspection team and environmental control agents.

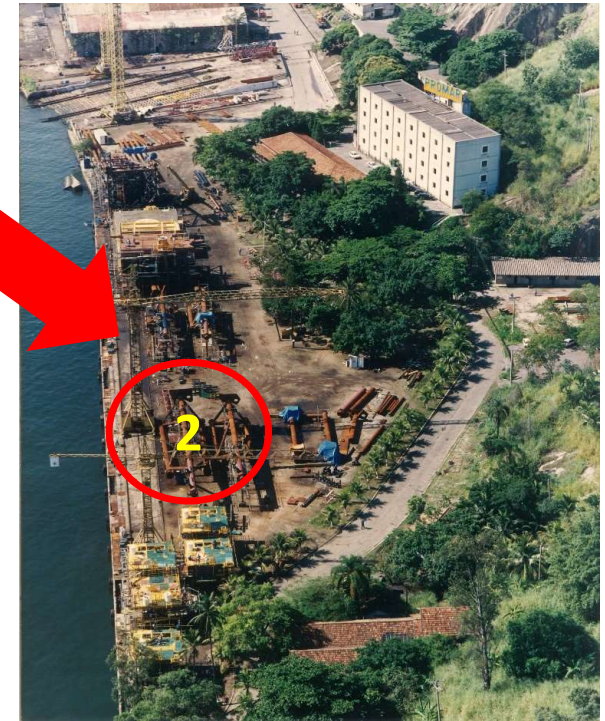
## Centro Integrado de descomissionamento 2- Area for receiving and selecting materials



**Projects executed in this area in the past**

Pescada and Arabaiana Project, 1997

Refurbishing of a rig from the 1st Family, similar to PCA2



**Construction of P1, P2 and P3**  
Executed in Mac Laren IC site



Space with 17,000 sqm of surface area, onshore, ready to receive all equipment and equipment from the offshore decommissioning site.

## Centro Integrado descomissionamento

### 2- Area for receiving and selecting materials



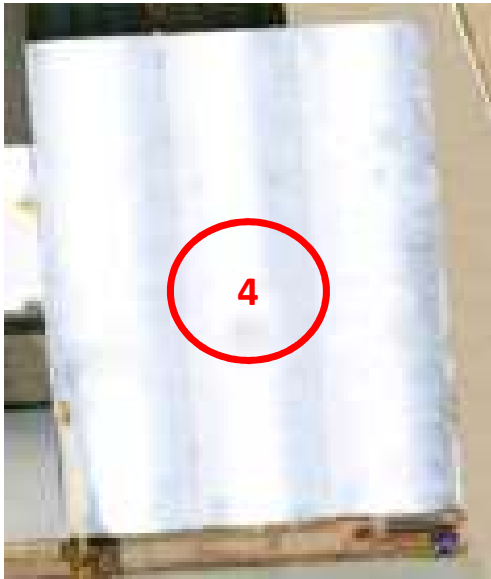


## Centro Integrado descomissionamento **3** – Area for materials cutting.



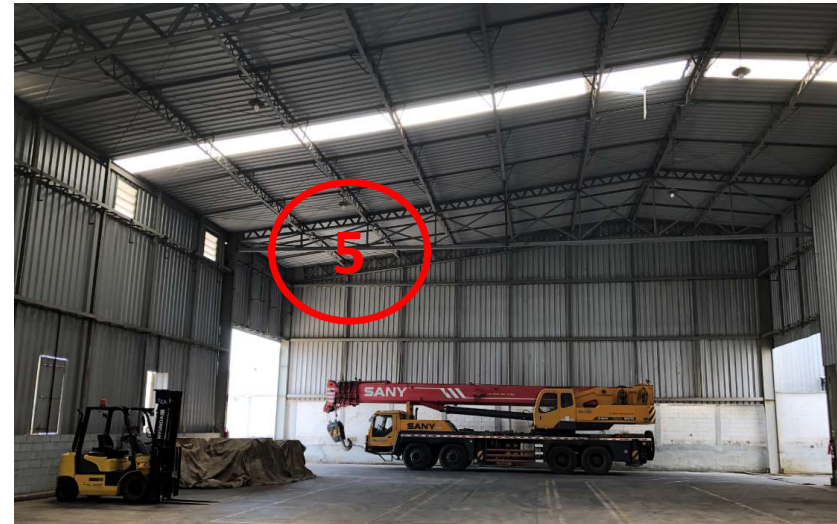
Slipway – 2,150 sqm with reinforced concrete floor, equipped with cranes, for cutting, disassembling of parts that will be made into scrap, in full compliance with environmental regulations.

## Centro Integrado descomissionamento 4 – Materials storage buildings



Three sheds whit 2,570 sqm of total surface area, crane bridges for storage equipment waiting for final destination

## Centro Integrado descomissionamento 5 – Sheds for the storage of NORM materials

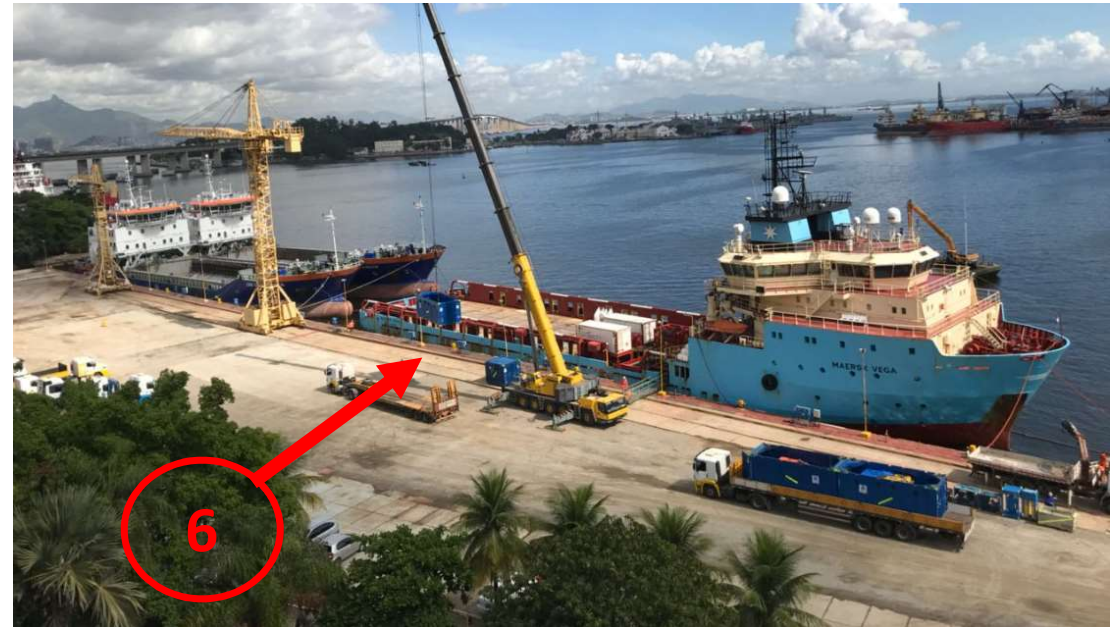


Segregated shed, 2,365 sqm, equipped with bridge crane, for the stock of radioactive contaminated materials to be delivered to Petrobras. This building is in full compliance with bid requirements and CNEN regulations.

## Centro Integrado descomissionamento 6 – Mooring quay



*Load in utilizando Cábreá na ML -IC*



380m long quay, for the mooring of barges and floating cranes, access channel 8m of draft, equipped with cranes and infrastructure

## Centro Integrado descomissionamento 7 – Mess room



Mess room for 500 people per shift

## Centro Integrado descomissionamento 8 – Warehouse



Two warehouse buildings, 1,275 sqm total surfasse área, for storage of tools and equipment.

1. Management of onshore activities in interface with client's offshore operations. A software for the full control of the full operation, with remote access will be made available to the client.
  
2. Infrastructure:
  - ✓ Load in engineering including selection of lift equipment available in the market
  - ✓ Load moving suitable to each Project with assorted derricks, cranes, and lift forks with different capacities
  - ✓ Dismantling engineering with proper preparation for the transportation to the final disposal
  - ✓ The facility will be equipped with Manpower, tooling and all necessary equipment for the cutting of decommissioned parts
  - ✓ Environment engineering – Environmental management of the process execute in the CID premises



## Additional CID services



1. Hiring of barges and other vessels for transportation from the decommissioning site to the CID;
2. Consulting for the preparation of necessary documentation for vessels' operation;
3. Consulting for the compliance of laws and other resolutions related ballast water and bioinvasion for the operation vessels;
4. Consulting on all activities related to navigation of hired vessels, including route, weather information and operation areas, etc.



## Serviços complementares do CID

5. Consulting for the necessary permits for the transportation of structures, materials and equipment including those considered as dangerous (NORM)
6. Consulting on the operation of foreign vessels in Brazilian waters
7. Consulting on underwater activities
8. Any other pertinent activity as requested by the client

# CID

## DECOMMISSIONING INTEGRATED CENTER



### CID PATNER



Kuehne + Nagel Brazil



# THANKS



**Contato:**

**Mac Laren :**

Luiz Britto Pereira – **Celular** (21) 97178-7571 ou 98899-6512

**E-mail:** [luizbritto@maclaren.com.br](mailto:luizbritto@maclaren.com.br)

**SIGMA Consultoria:**

Mauricio Almeida – **Celular** (21) 999633303

**E-mail:** [mauricioalmeida@sigmaconsultoriarj.com.br](mailto:mauricioalmeida@sigmaconsultoriarj.com.br)  
[contato@sigmaconsultoriarj.com.br](mailto:contato@sigmaconsultoriarj.com.br)